



We are set standards
in manufacture,
in flexibility, in design,
in vending!

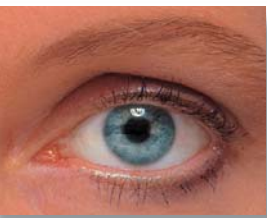


MULTI SSL SL BL



GB-V-2.1

This product is made by Deutsche Wurlitzer GmbH, Stemwede-Levern, Germany



Universal Vending Machines MULTI SSL, SL, BL



Technical details



MULTI SSL

Dimensions

- ➔ **Width 70cm**
- ➔ Height 183.0cm, depth 88.5cm

Weight

- ➔ 268.0kg without cooling unit
- ➔ 295.5kg with standard cooling unit
- ➔ 302.0kg with food cooling unit

Power supply

- ➔ 230volts
- ➔ Extra-low voltage supply for internal functions
- ➔ Illumination 1 x 18watts, 2 x 8watts

All models are also available without cooling unit for vending of ambient temperature products.

MULTI SL

Dimensions

- ➔ **Width 85.3cm**
- ➔ Height 183.0cm, depth 88.5cm

Weight

- ➔ 293.5kg without cooling unit
- ➔ 321.0kg with standard cooling unit
- ➔ 327.5kg with food cooling unit

Power supply

- ➔ 230volts
- ➔ Extra-low voltage supply for internal functions
- ➔ Illumination 1 x 18watts, 2 x 8watts

The cooling unit can be exchanged in a matter of minutes, this allows high flexibility in vending of products of different temperature requirements.

MULTI BL

Dimensions

- ➔ **Width 100.3cm**
- ➔ Height 183.0cm, depth 88.5cm

Weight

- ➔ 319.0kg without cooling unit
- ➔ 346.5kg with standard cooling unit
- ➔ 353.0kg with food cooling unit

Power supply

- ➔ 230volts
- ➔ Extra-low voltage supply for internal functions
- ➔ Illumination 1 x 18watts, 2 x 8watts

Power consumption SSL, SL, BL

- ➔ 70w without cooling unit
- ➔ 300w with standard cooling 13°C - 20°C
- ➔ 600w with food cooling unit down to 3°C



Equipment



All Multi SSL, SL and BL models also available with or without design elements ...

respectively with only one design element.



Design elements



Features

- Programmable microprocessor control unit (IVC) with data storage, test and service programs
- Prepared for coin systems with change and Multivend facility:
 - MDB or BDV standard
 - Executive standard
- Connection for cashless payment systems
- Slide-out assembly with control unit and coin system for easy maintenance
- Illuminated alphanumeric display in two lines
- Internal thermometer with visible digital temperature display
- Panel, delivery flap as well as trays and spirals made of stainless steel
- Prepared for VarioTemp different temperature levels

Optional

- Cooling unit with two different temperature levels
- Health switch
- VarioTemp option
- BDTA infrared interface
- Different coin systems
- Illuminated advertising header
- Illuminated delivery box
- Safety glass
- Security coin insertion
- Special tray for tube products
- Tray insert for tube products
- Guide rail for cans
- Heating
- Compartment for additional spirals
- Lateral food panels
- Special RAL colours

Cooling unit

- Sealed system with R134 A refrigerant (free of CFCs)

Cooling capacity

- Adjustable temperature range 3°C – 18°C
 - Maximum performance:
 - Standard cooling unit 19°C below ambient
 - Food cooling unit 28°C below ambient
 - Operation with VarioTemp:
 - Super cooled zone down to 3°C
 - Standard zone 13°C – 20°C
- The above specification valid with ambient temperatures not higher than 32°C.

Standard colours

1. Cabinet: RAL 9010 (pure white) or RAL 7035 (light grey)
2. Design elements: RAL 7037 (dusty grey)

Special colours

Special RAL colours available at extra cost. If required, we can provide decals with your company or product logo.

Individual design with your company colours or logos





Universal Vending Machines
MULTI SSL, SL, BL



Equipment



Optimum product illumination with 3 fluorescent lamps

Double glazed window. Design element with additional shatter-proof window made from strong Macrolon

Easy exchange of stainless steel trays and spirals for different product sizes

Central lock with triple interlocking. Robust locking mechanism with lever

Deep delivery box for voluminous products

Extra insulation of delivery compartment

Modular coin insertion conforms to disabled height regulations

Strong metal selection buttons with integrated coin return button for motor driven coin return

Sliding panel provides access to electronics and coin mechanism. Door free of electrical and mechanical components

Duomat option to increase capacity

Easily removable delivery compartment

Removable kick plates allow mechanical handling from front and sides for ease of installation

GERMANY
Deutsche Wurlitzer GmbH
Niederdorf 5
D-32351 Stemwede-Levern
Tel.: +49 (0)5745 28-0
Fax: +49 (0)5745 28220
www.deutsche-wurlitzer.de
contact@deutsche-wurlitzer.de

GREAT BRITAIN
Deutsche Wurlitzer UK
13 Moorbrook
Southmead Industrial Estate
Didcot, Oxfordshire, OX11 7HP
Tel.: +44 (0)1235 813400
Fax: +44 (0)1235 811109
www.deutsche-wurlitzer-uk.com
info@deutsche-wurlitzer-uk.com

USA
Deutsche Wurlitzer USA Inc.
1341 Estes Street
Gurnee, Illinois 60031
Tel.: +1 847 662 1700
Fax: +1 847 662 1212
www.dw-usa.net
info@dw-usa.net